



**AT A GLANCE**

**Native American Students at the University of Arizona**

Multicultural Affairs and Student Success • PO Box 210021 • Tucson AZ 85721-0021 • (520) 621-1094

**ENROLLMENT** <sup>1, 2</sup>

Level	Number	% Known Race/ Ethnicity University Enrollment by Level	% Total University Enrollment by Level
Fall 2006 Headcount, Native Americans	812	(36,805)	2.3%
Undergraduate	606	(28,442)	2.2%
Freshman	183	(6,410)	3.0%
New Freshmen	162	(6,009)	2.8%
New Freshmen AZ Residents	118	(3,717)	3.2%
New Transfers	57	(1,962)	3.1%
Sophomore	100	(5,339)	2.0%
Sophomore AZ Residents	89	(3,560)	2.6%
Junior	102	(5,352)	2.0%
Junior AZ Residents	90	(5,019)	2.4%
Senior	149	(6,707)	2.4%
Senior AZ Residents	142	(5,341)	2.8%
Graduate & Professional	206	(8,363)	2.7%
Graduate	178	(7,105)	2.7%
Professional	28	(1,258)	2.4%
Law	17	(469)	4.3%
Medicine	9	(468)	2.1%
Pharmacy	2	(321)	0.06%

Fall 2006 Undergraduate Enrollment by Top Three Colleges

College	Number	% Total Native American Undergraduates
College of Social and Behavioral Sciences	101	16.7%
University College	84	13.9%
College of Science	71	11.7%

**PERSISTENCE RATES** <sup>1, 2</sup>

First Year Retention Rate, (i.e. Fall 2005 Cohort Returning Fall 2006)	58.1%	(79.3%)
Average, First Year Retention Rate, 1993-2005	61.3%	(77.0%)
Average, Second Year Retention Rate, 1993-2004	46.5%	(66.2%)

**GRADUATION** <sup>1, 2</sup>

Rates, First Time, Full Time Freshmen

4-yr. Graduation Rate, 2001 entering cohort	14.0%	(33.0%)
4-yr. Average Graduation Rate, 1991-2001	8.5%	(27.1%)
5-yr. Average Graduation Rate, 1991-2000	19.9%	(49.4%)
6-yr. Average Graduation Rate, 1991-1999	26.3%	(54.7%)

2005-06 Graduates by Degree Level

Degree	Number	% Total Degrees by Level
Bachelors	75 (5,613)	1.3%
Masters	41 (1,435)	2.9%
Doctorate	4 (395)	1.0%
Professional	13 (303)	4.3%

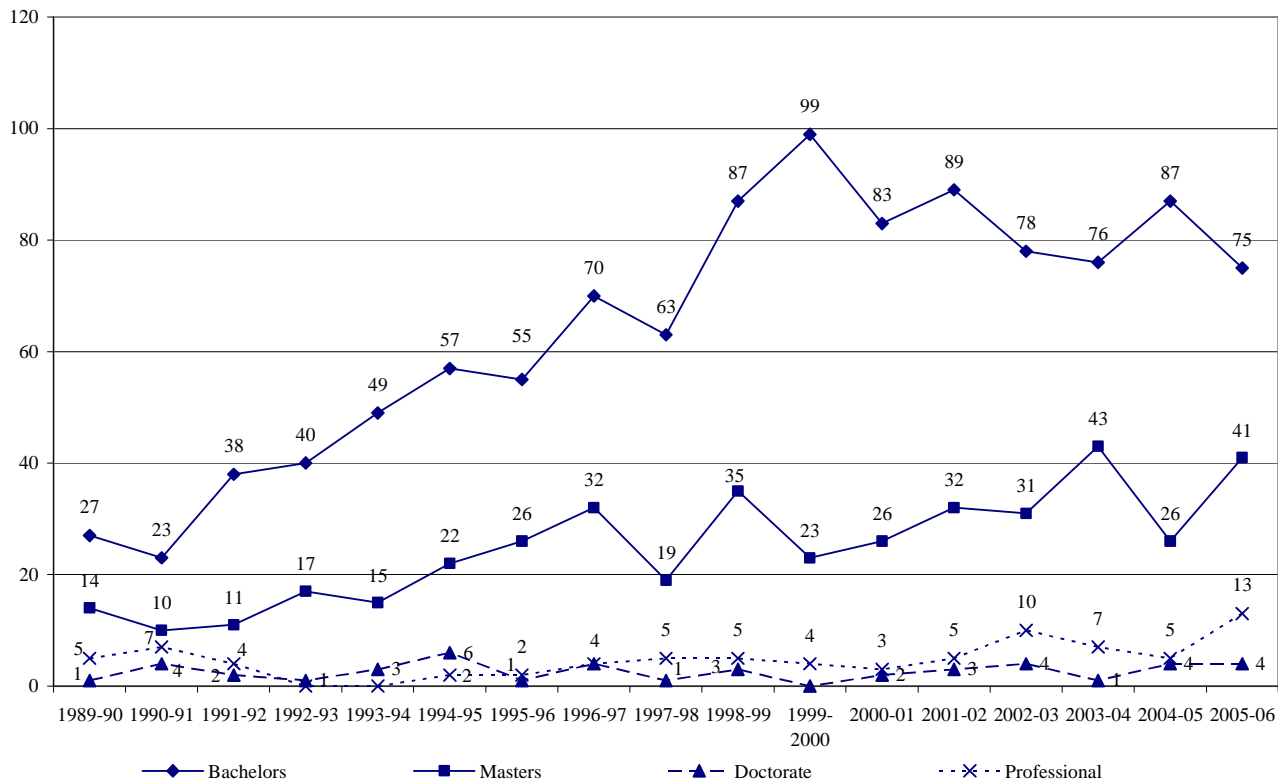
2005-06 Baccalaureates by Top Three Colleges

College of	Number	% Total Native Americans
Social and Behavioral Sciences	21	28.0%
Agriculture and Life Sciences	9	12.0%
Education	8	10.7%

<sup>1</sup> Source: UA Decision and Planning Support.

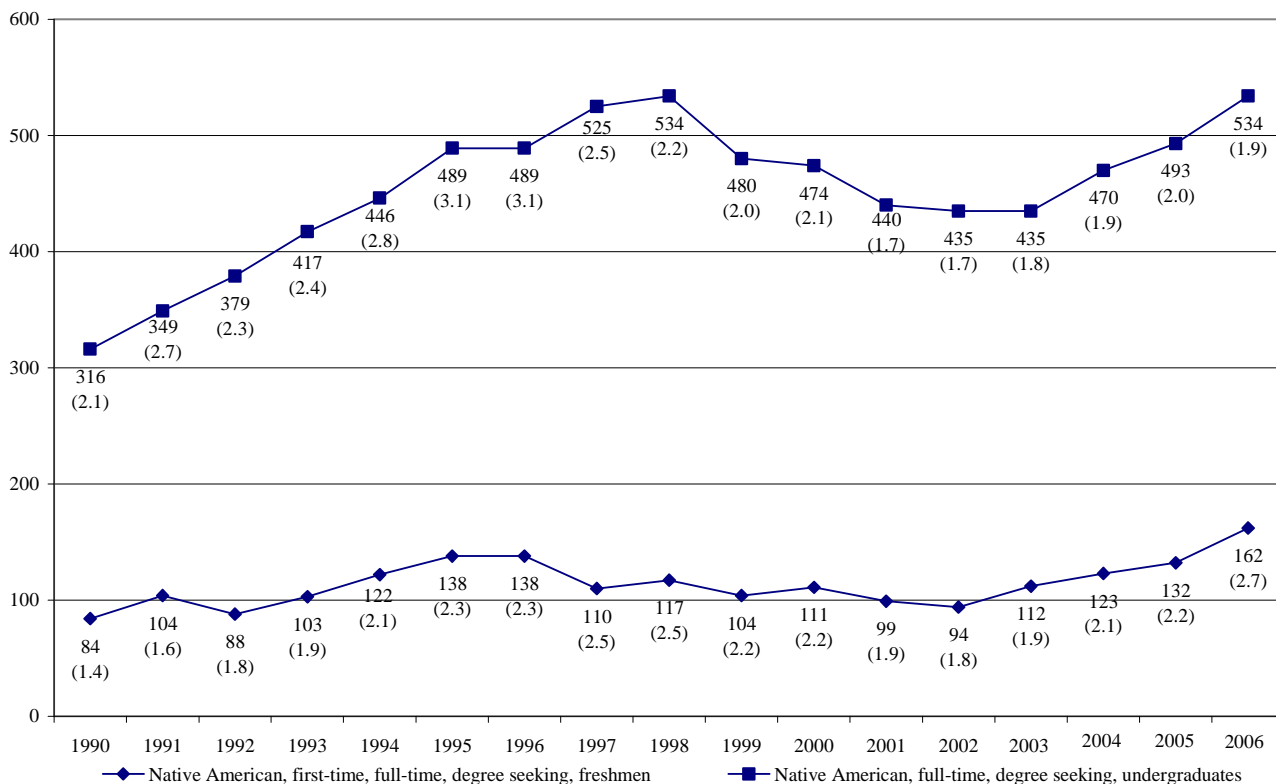
<sup>2</sup> Values in parenthesis indicate total University number or percent.

**Number of Degrees Awarded to Native Americans at the University of Arizona by Level, 1990-2006**



Source: UA DAPS Fact Books

**Number (and Percent) Degree Seeking, Full Time Native American Students Enrolled at the University of Arizona, 1990-2006**



Source: IPEDS data

## ACADEMIC PERFORMANCE OF FULL-TIME UNDERGRADUATES <sup>3, 4, 5</sup>

Academic Probation, Spring 2007

Dean's List, Spring 2007

Classification	% of All Probation Students by Classification	% of Native Americans by Classification	Classification	% All Dean's List Students by Classification	% of Native Americans by Classification
Overall	5.3%	22.3%	Overall	0.9%	5.4%
Freshman	5.8%	25.7%	Freshman	1.7%	4.4%
Sophomore	4.7%	30.0%	Sophomore	0.2%	2.0%
Junior	4.6%	19.6%	Junior	0.7%	4.9%
Senior	6.3%	14.8%	Senior	1.1%	9.4%

Grade Point Average, Spring 2007

GPA	% of Native Americans	GPA	% of Native Americans	GPA	% of Native Americans
3.50 - 4.00	13.1%	2.50 - 2.99	23.5%	< 2.00	17.3%
3.00 - 3.49	19.0%	2.00 - 2.49	26.6%		

<sup>3</sup> Based on data from UIS in June.

<sup>5</sup> Does not include unclassified students.

<sup>4</sup> Based on end of spring 2007 data.